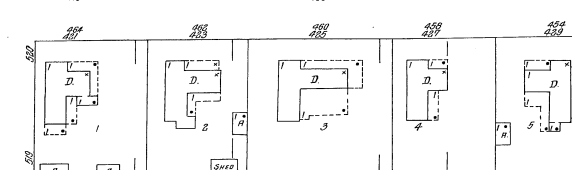
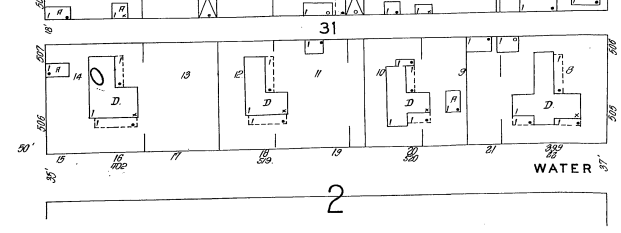
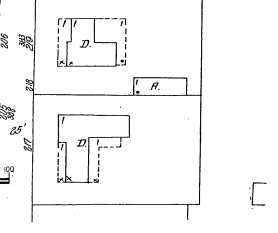
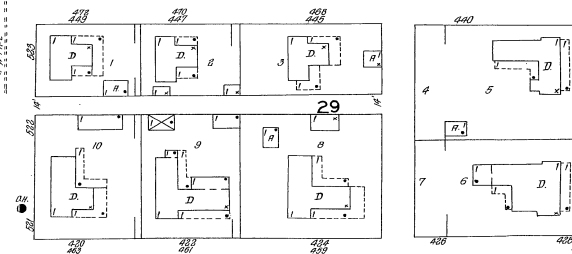
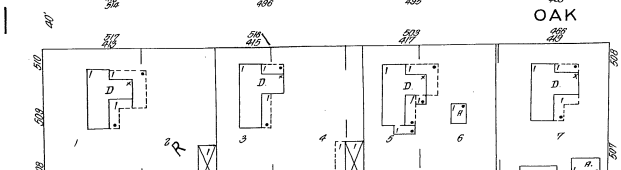
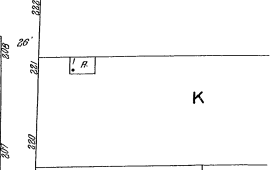
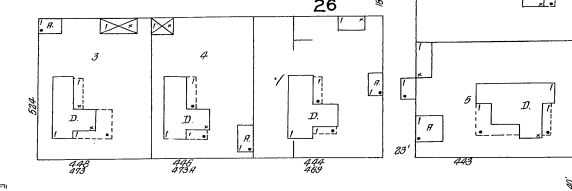
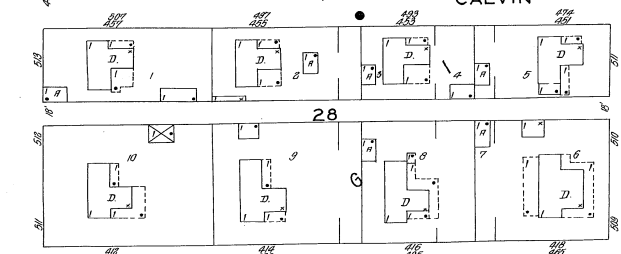
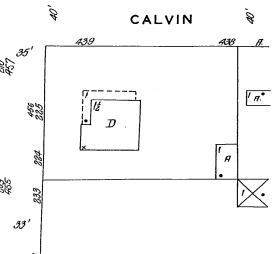
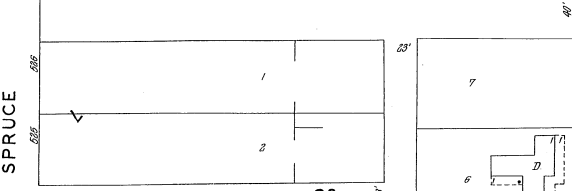
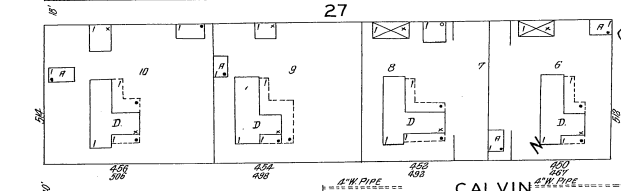
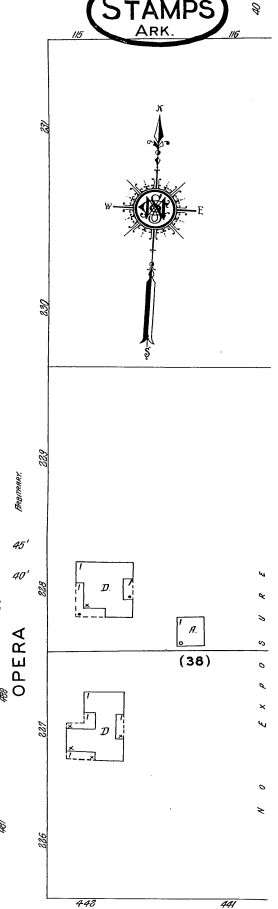
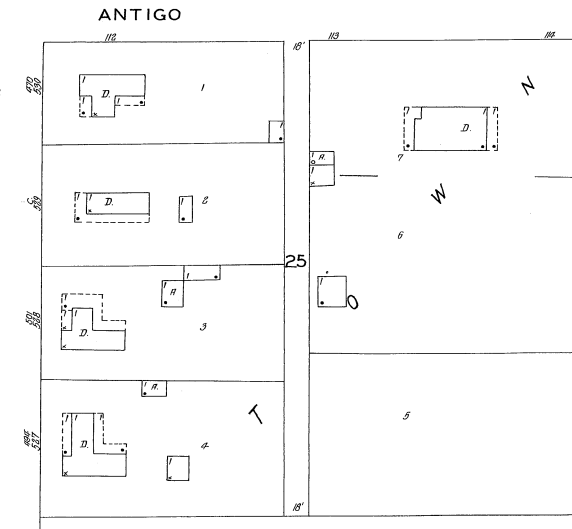
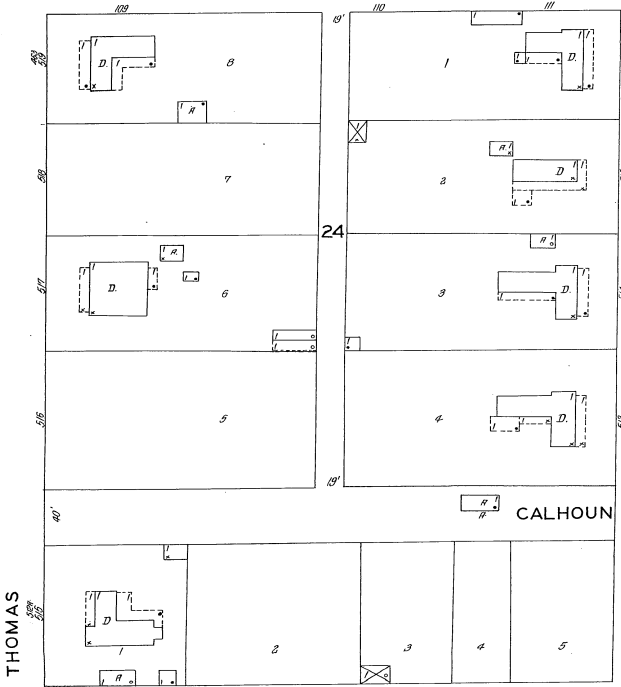


APR. 1930
STAMPS
ARK.



SCALE 50 FT. TO ONE INCH
Copyright 1931, The Standard Map Co.

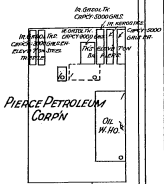
4

53

STAMPS GIN COMPANY
NO WATERWORKS - NO WENT LIGHTS ELEC. POWER
SEWER. GAS & PHONE CITY WATER MAINS GAS
SQUARE. SALE PRICE - LOW FLOOR NOT PROTECTED



HOPE RD.



61

GULF REFINING CO.
OIL W. H. O.

WHITE AV.

CALVIN ST.

58

60

ANTIGO

APR. 1930
STAMPS
ARK.

39

BUCHANAN

BROWN

STAMPS PUBLIC SCHOOL

59
(1A)

CALVIN

1ST 2 ST.

SOUTHERN ICE & UTILITIES CO.

CHURCH - 13 TONS PER DAY
NO WATERWORKS - SEWER GAS - LIGHTS ELEC.
POWER - OIL ENGINE - CITY WATER.

Y.M.C.A.
HEAT - GAS - LIGHTS - ELEC.
GYMNASIUM

RANDALL HOTEL
(COLONIAL)

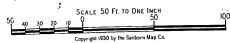
NEHI BOTTLING WORKS
POWER - ELEC. - HEAT - GAS - LIGHTS - ELEC.

RAILROAD

THOMAS

WAMPUS

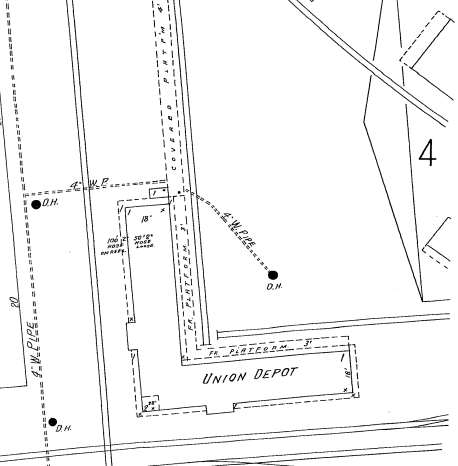
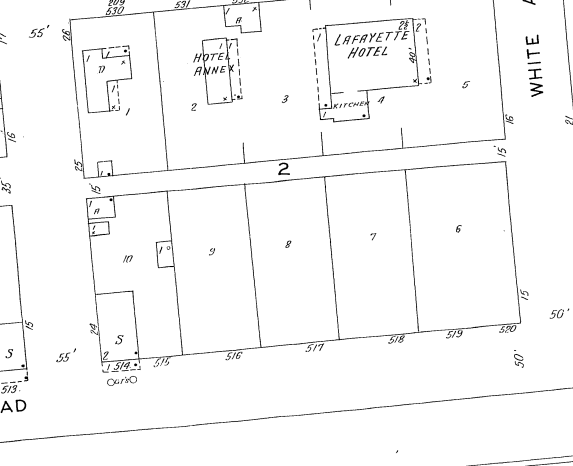
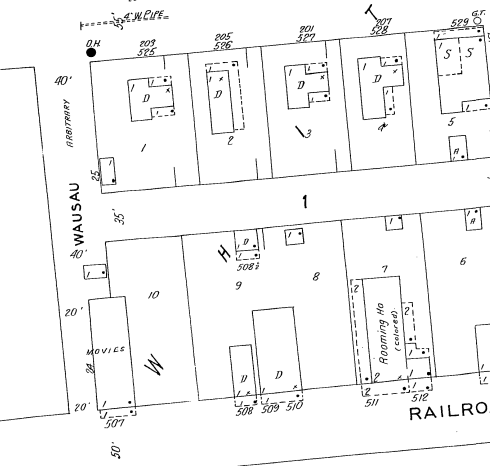
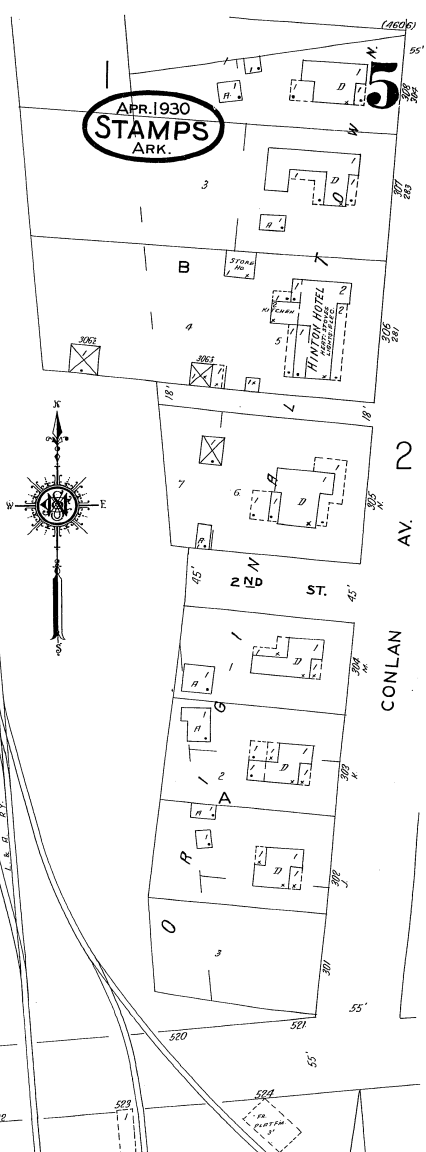
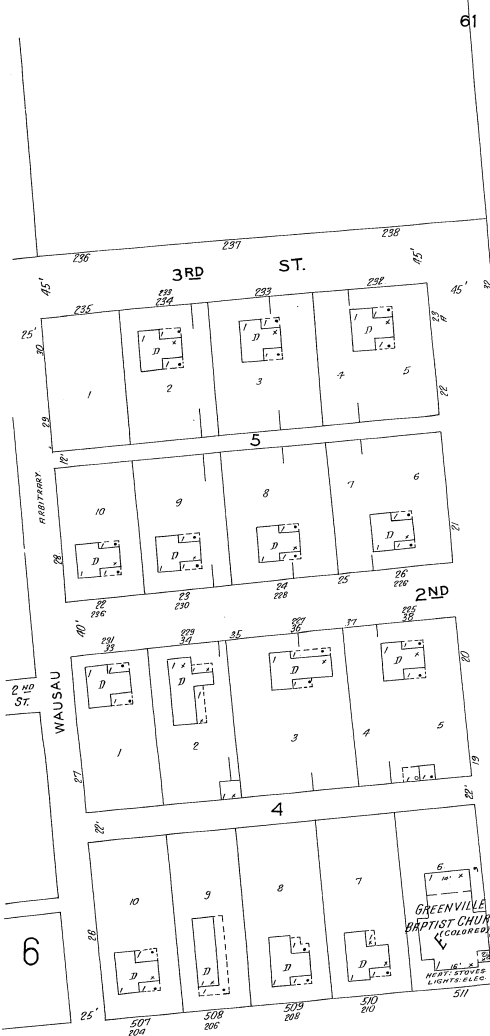
6



9

NO EXPOSURE

N O E X P O S U R E



SCALE 50 FT TO ONE INCH

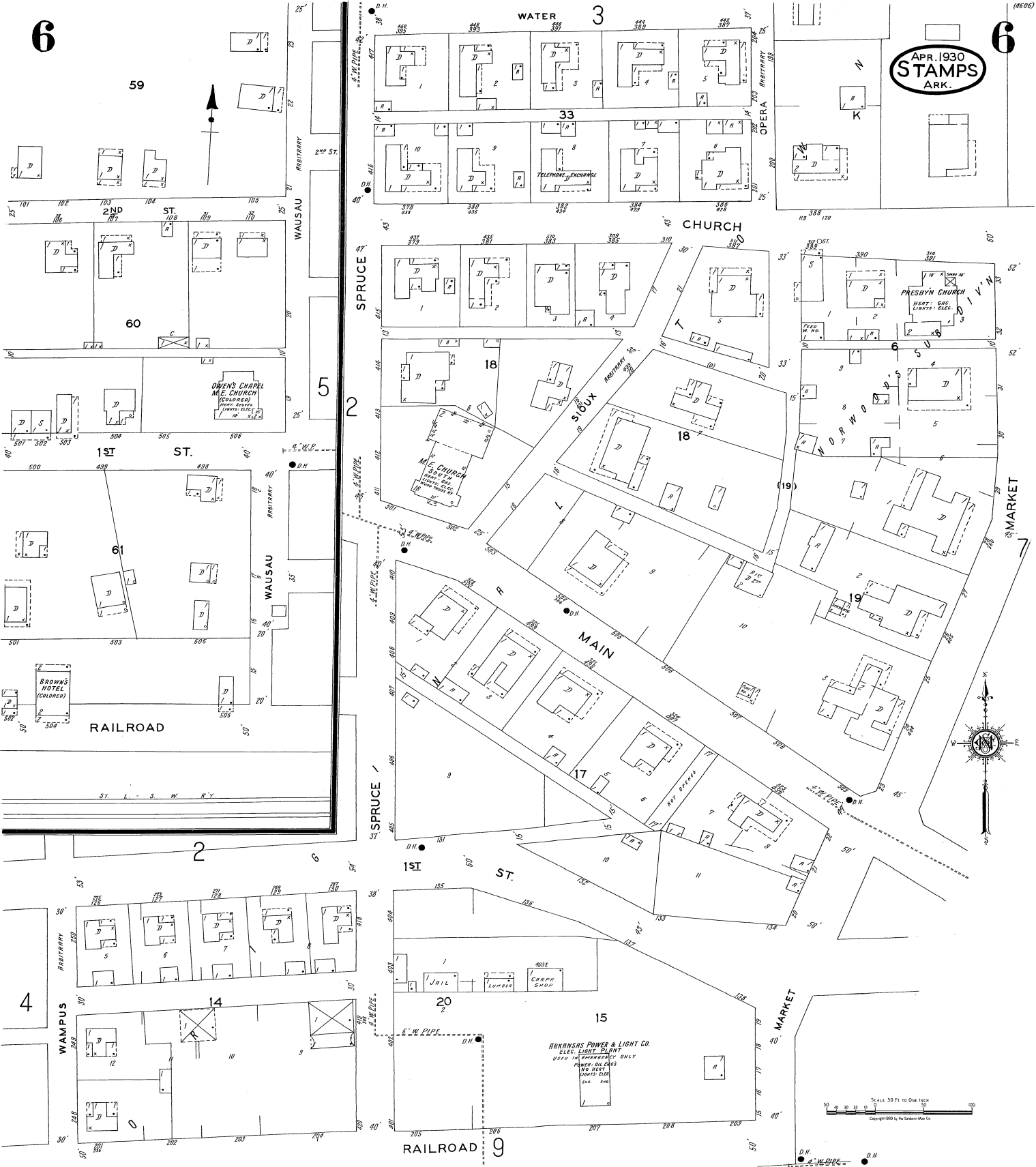
Copyright 1930 by the Scales & Map Co

N O E X P O S U R E

6

6

APR. 1930
STAMPS
ARK.



59

60

1ST ST.

ST.

61

RAILROAD

2

5

2

6

4

14

10

9

RAILROAD

WATER

3

33

CHURCH

18

18

MAIN

1ST ST.

15

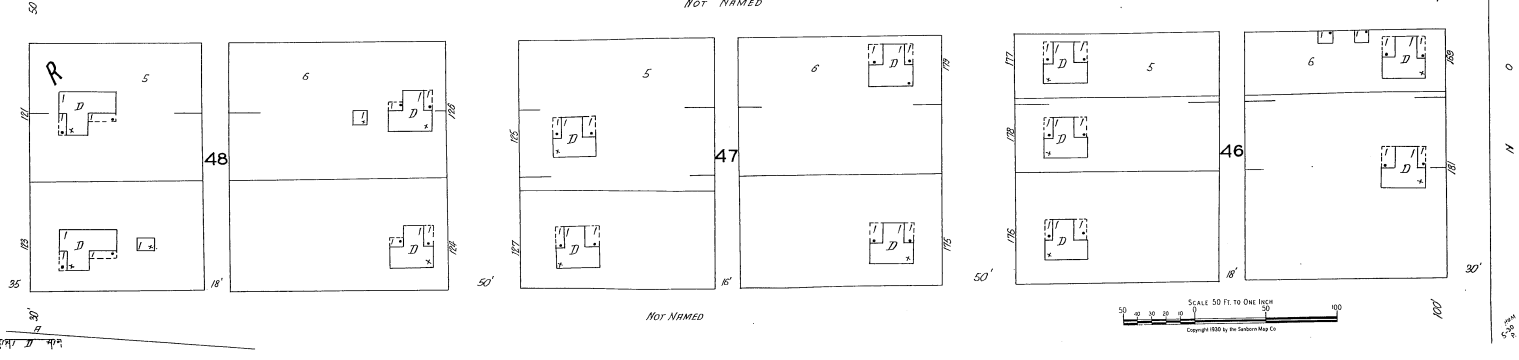
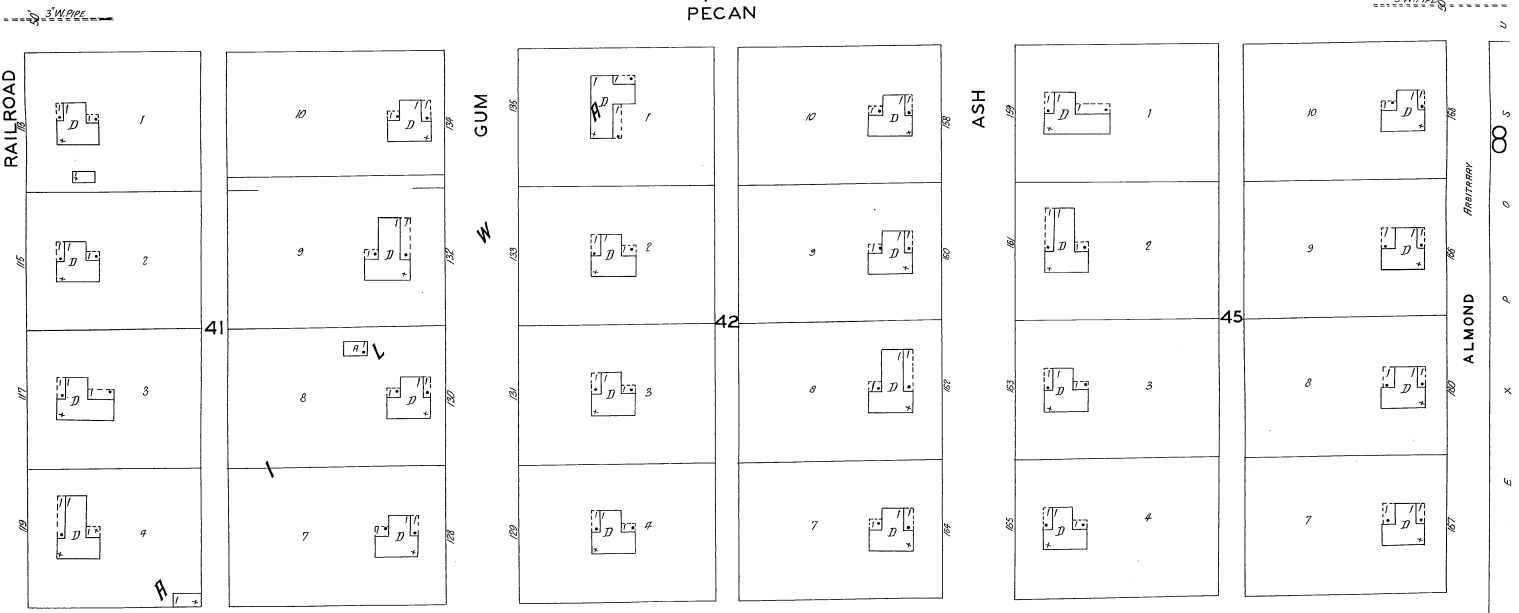
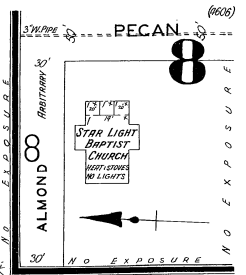
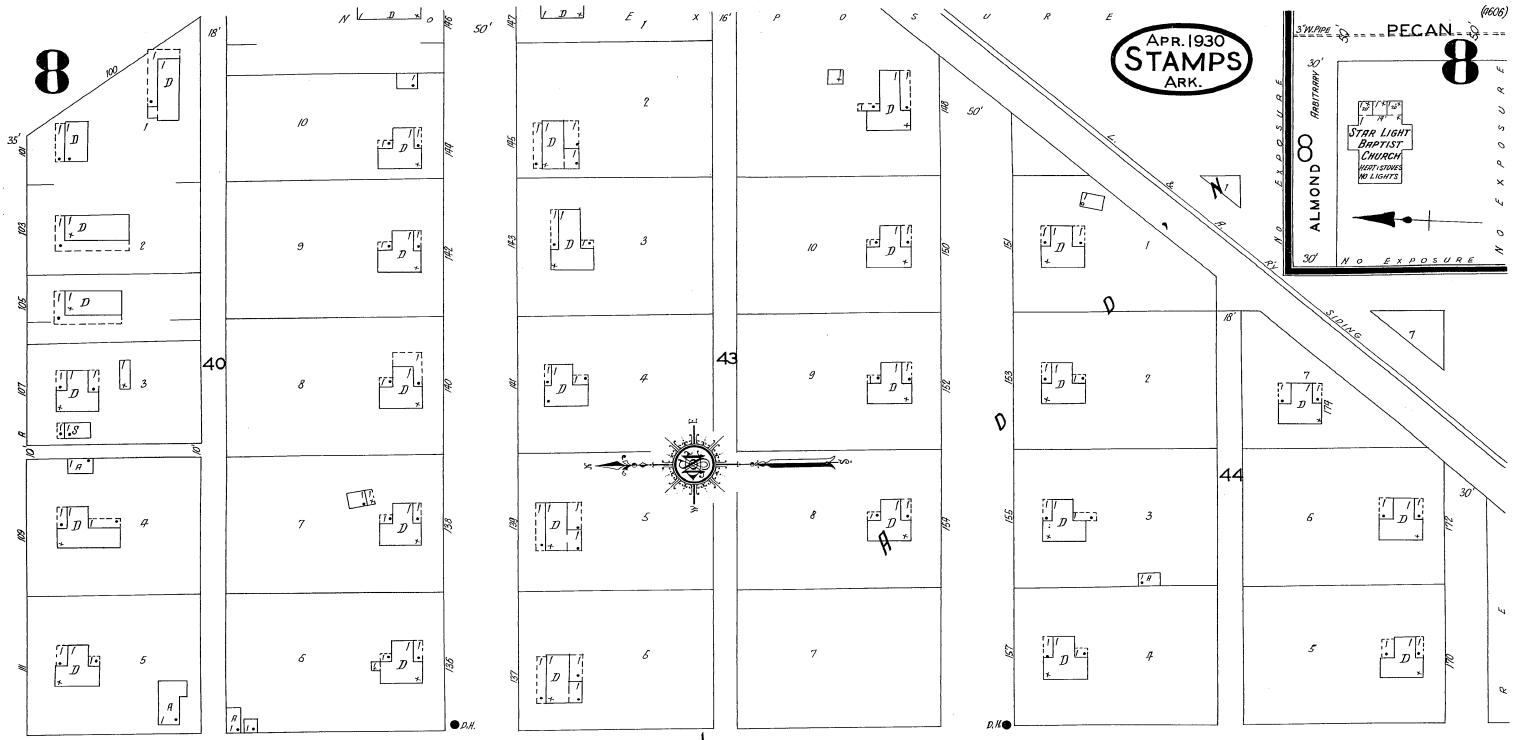
ARKANSAS POWER & LIGHT CO.
ELEC. LIGHT PLANT
USED IN EMERGENCY ONLY
PUMP: OIL PANS
150 HEAT
LIGHTS: ELEC.
200 200

SCALE 30 FT. TO ONE INCH

Copyright 1930 by The Standard Map Co.

APR 1930
STAMPS
ARK.

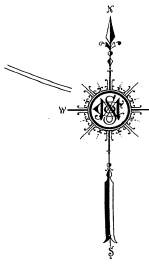
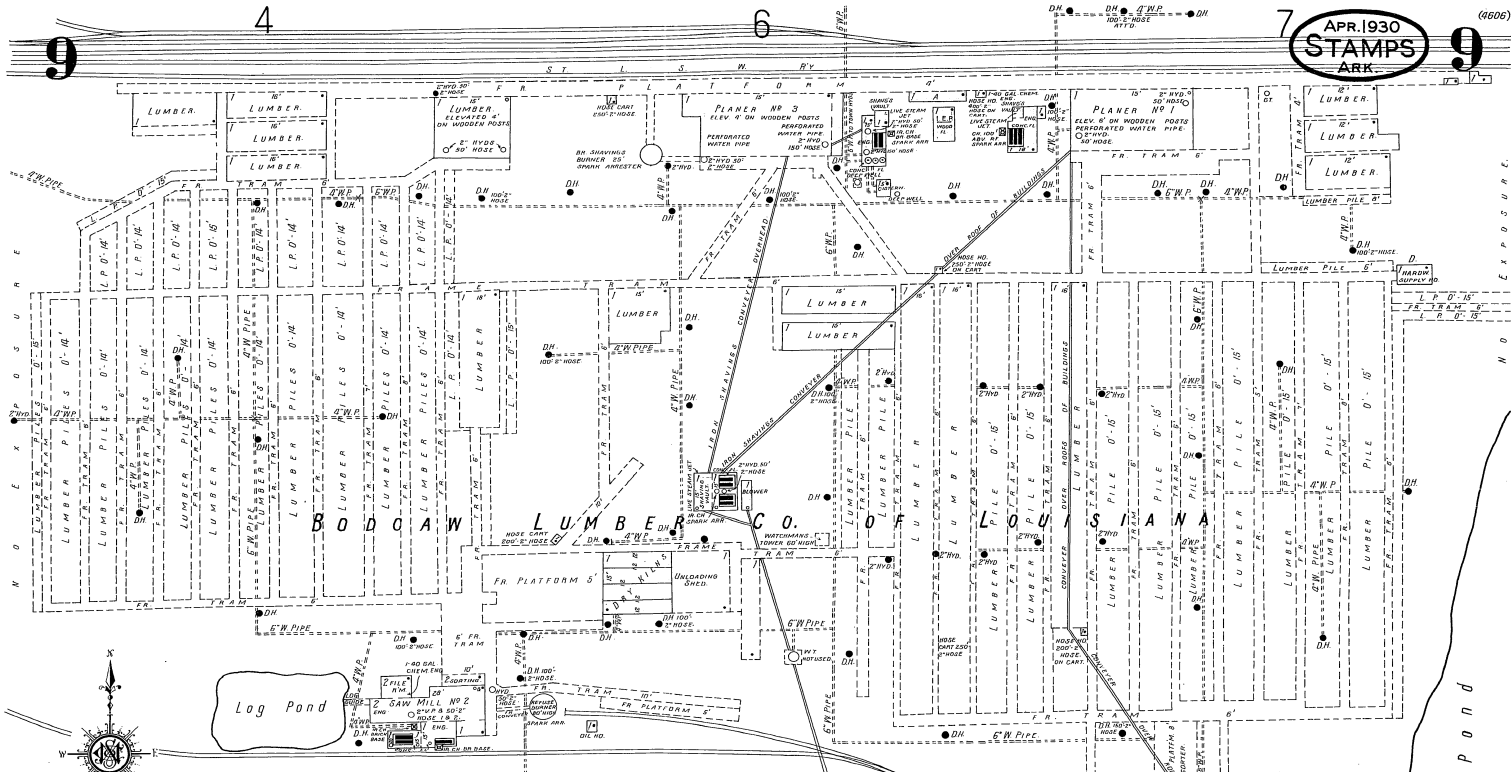




SCALE 50 FT. TO ONE INCH
Copyright 1930 by the Seaboard Map Co.

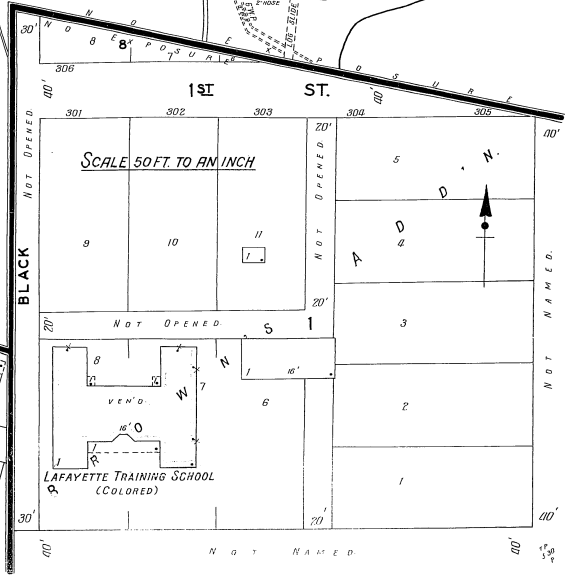
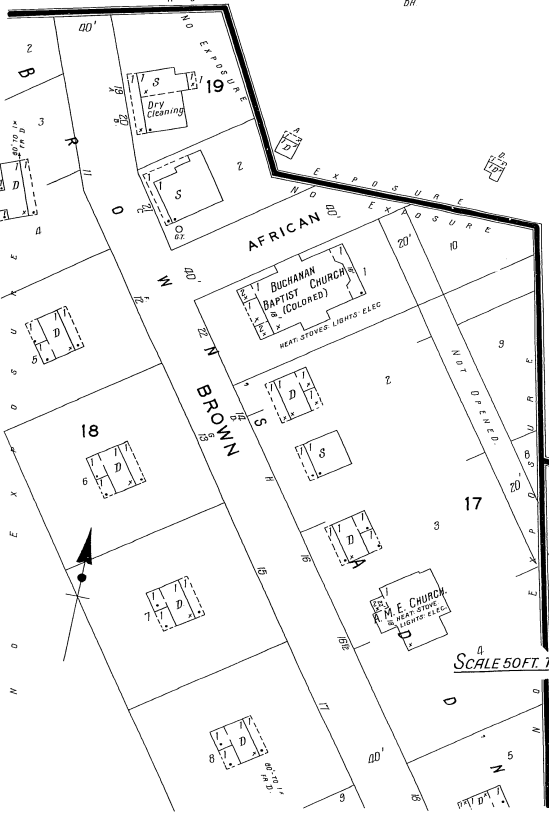
APR 1930
STAMPS
ARK

(6006)



- BUILT 1888 -
 AVERAGE AMOUNT OF LUMBER ON HAND 20 MILLION FT.
 CAPACITY 175,000 PER DAY
 DISTANCE TO FOREST 125 MILES
 ENTIRE PLANT BUILT ON SOLID GROUND, NOT LOG SAWING.
 1-NIGHT WATERMAN IN TOWER, 8-NIGHT WATERMAN
 PATROL YARD & BUILDINGS APPROVED, CLOCK-10
 NIGHT MEN IN BARRACKS, MILLS, POWER STEAM
 FUEL, SHEDS, HEAT GAS IN OFFICE, LIGHTS ELEC.
 (1-1/2) WIND & HOSE AS SHOWN, 6-80 GALLON
 ENDS, HOLES & PAILS LIVE STEAM JEIS IN ALL
 DRY MILLS & SHEDS, VALVES, PERFORATED
 WATER PIPES AS SHOWN, METAL DOWNERS TO
 ALL MACHINES 1/2 IN. DIA. W/ T. ELS. 65' ON
 STEEL TRUSSES, DISCONNECTED FOR FIRE
 PUMPS SEE YOUTH REPORT.

SCALE 100 FT. TO ONE INCH
 Copyright 1929 by the Eastern Map Co.



SCALE 50 FT. TO AN INCH

SCALE 50 FT. TO AN INCH