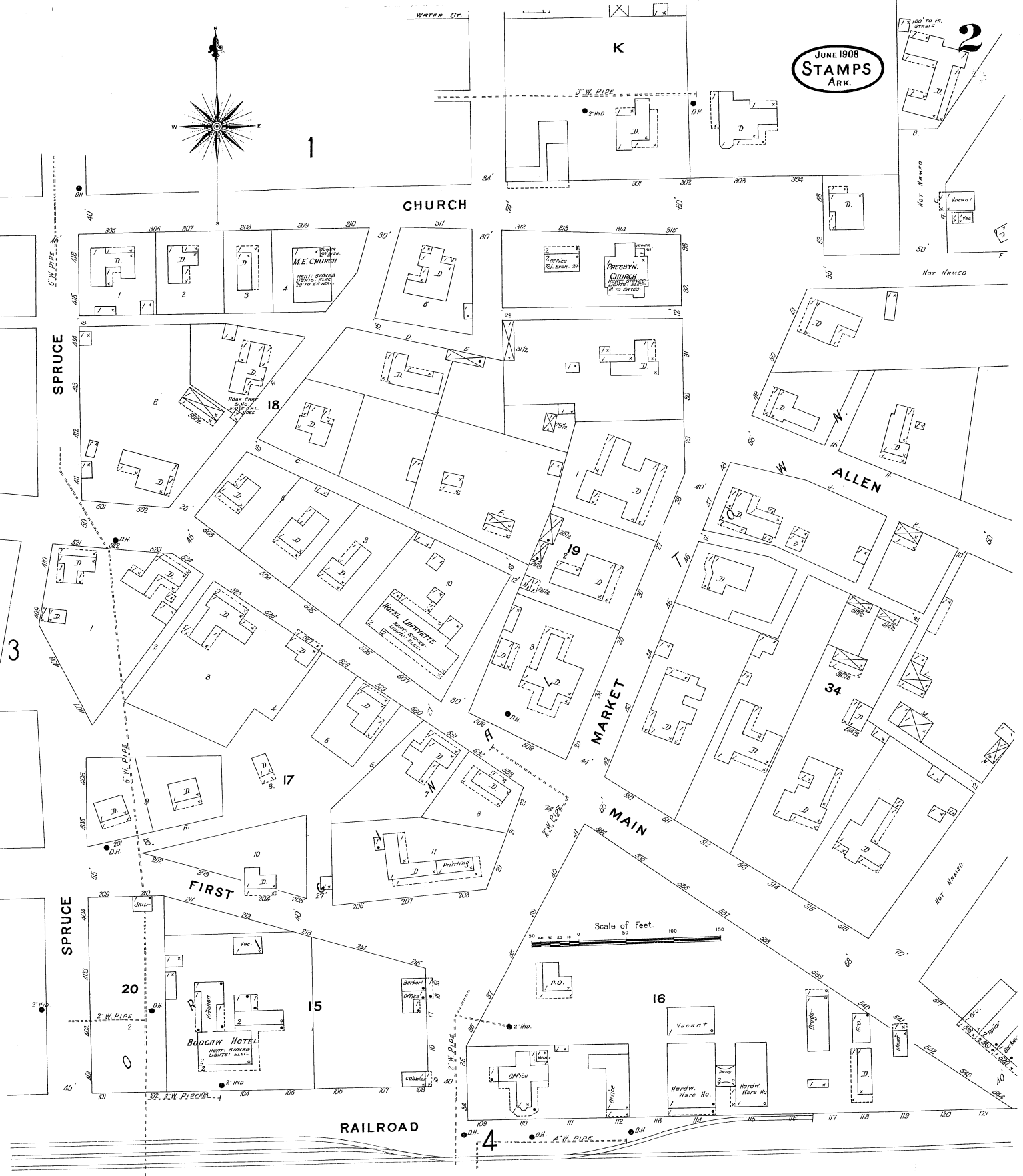
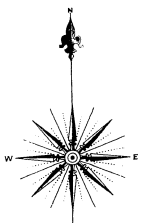


JUNE 1908
STAMPS
ARK.



CHURCH

SPRUCE

ALLEN

MARKET

MAIN

FIRST

RAILROAD

Scale of Feet.

BOGRAW HOTEL

ME CHURCH

PRESBYN. CHURCH

HOTEL LINCOLN

BOGRAW HOTEL

Office

Office

Hardw. Ware Ho

Hardw. Ware Ho

FIRST

3

1

2

4

NOT ARMED

NOT ARMED

NOT ARMED

NOT ARMED

NOT ARMED

NOT ARMED

NOT ARMED

NOT ARMED

NOT ARMED

NOT ARMED

NOT ARMED

NOT ARMED

NOT ARMED

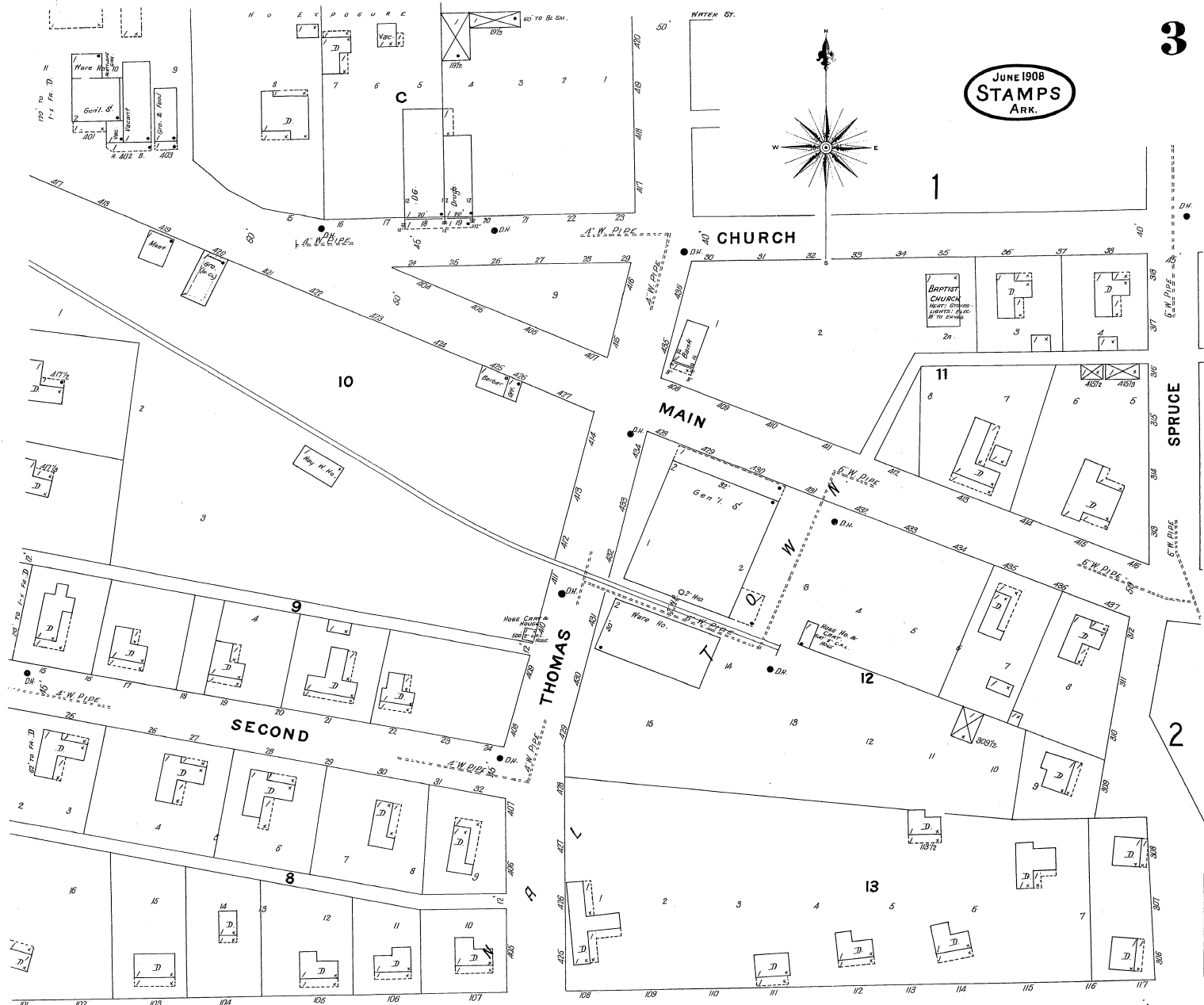
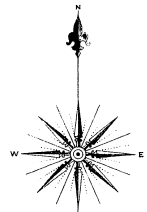
NOT ARMED

NOT ARMED

NOT ARMED

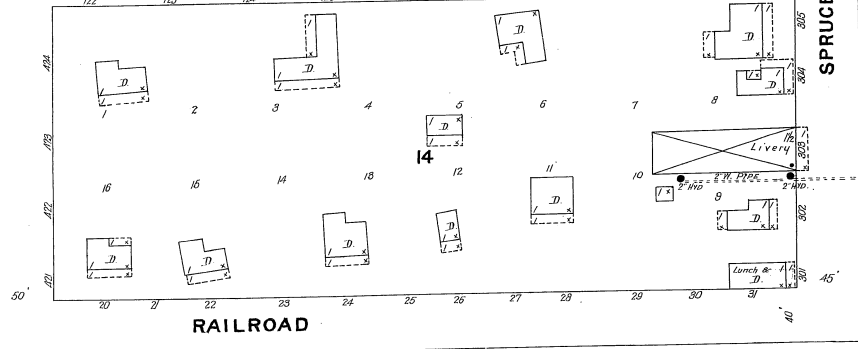
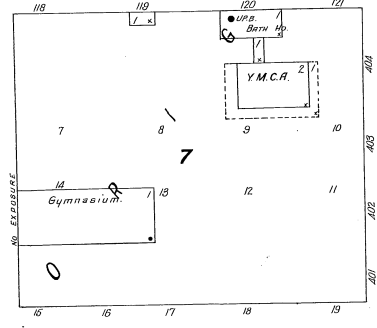
NOT ARMED

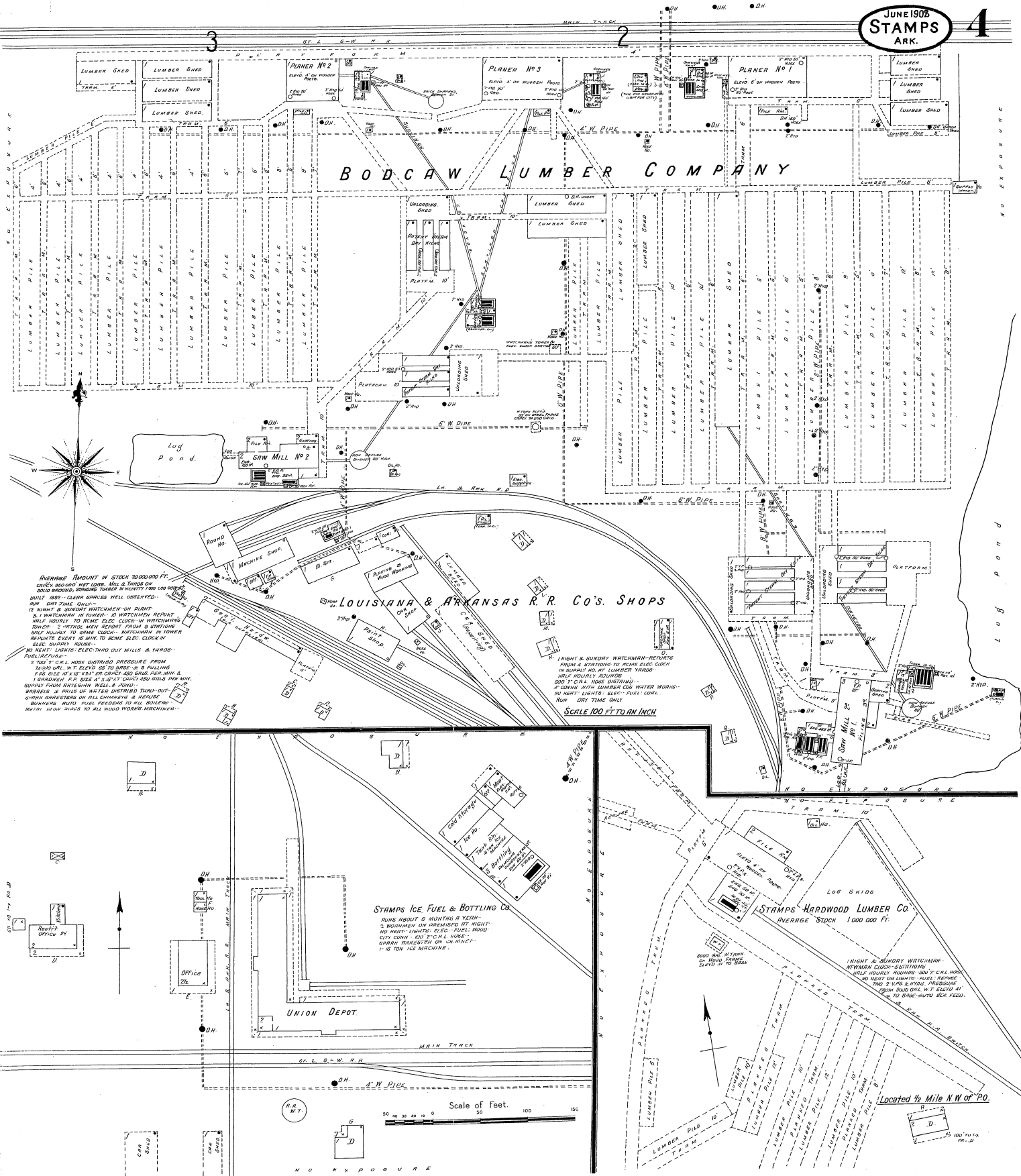
JUNE 1908
STAMPS
ARK.



Scale of Feet. 0 50 100 150

BURNS & BOURLANDS' GIN.
NO HEAT, LIGHT, MATCHMAN OR
OTHER FIRE FULL POWER
MACHINE'S & MACHINERY SO BURNING
SHOULD BE KEPT OFF
STAMP SET IN LIGHT PLACE.
Located 3/4 Mile N.W. of P.O.





BODCAW LUMBER COMPANY

LOUISIANA & ARKANSAS R.R. CO'S SHOPS

STAMPS HARDWOOD LUMBER CO.
PIERCE STOCK 1000 000 FT.

STAMPS ICE FUEL & BOTTLING CO.
RUNS ABOUT 6 MONTHS A YEAR -
2 WATCHMEN ON PREMISES AT NIGHT
NO LIGHTS - ELECTRIC FUEL HOUSE
CITY COUNCIL NOT FIC'LE HOUSE -
OFFICE BARRISTER ON COMPANY -
16 TON ICE MACHINE.

AVERAGE AMOUNT IN STOCK 2000000 FT.
CAP'EN 850000 NET LUMBER MILL & YARDS OF
SOLID GROUND, SURROUNDING THEREIN IN HEIGHT 1000 LBS WEIGHT
ABOUT 800 - CLASS SPICLES WELL OBSERVED.
RUN DRY TIME ONLY.
1 NIGHT & SUNDAY WATCHMEN ON PLANT
& 1 WATCHMEN IN POWER. 2 WATCHMEN REPORT
HALL HOURLY TO HOME ELEC. CLOCK IN WATCHMEN
TOWER. 2 WATCHMEN REPORT FROM 3 STATIONS
HALL HOURLY TO HOME CLOCK. WATCHMEN IN TOWER
REPORTS EVERY 15 MIN. TO HOME ELEC. CLOCK
ELEC. SUPPLY HOUSE.
NO NIGHT. LUMBER ELECTRIC THRU OUT MILLS & YARDS -
FUEL IN FURNACE -
3 3/4" C.I. PIPE DISTRICT PRESSURE FROM
3400 PSI. W.T. ELEV'D 85 TO BASE - 3 PULLING
3 3/4" SIZE 1 1/2" DIA. OR 600 PSI PER MIN. &
1 SANDMAN P.P. SIZE 1 1/2" DIA. 450 PSI PER MIN.
SUPPORT FROM BURGESS WELLS & 4000 -
BARRIS & 1000 PSI WATER DISTRICT THRU OUT
ORANGE ARRESTERS ON ALL CHIMNEYS & REFUSES
BURNING. RATED TON PER HOUR TO THE BARRIS
METAL 4500 PSI TO ALL WOOD WORK MACHINES.

1 NIGHT & SUNDAY WATCHMEN REPORTS
FROM 4 STATIONS TO HOME ELEC. CLOCK
IN SUPPLY HO. BY LUMBER YARDS.
HALL HOURLY ROUNDS
300 T. C.I. PIPE WATERBURY
2 COND. WITH LUMBER CO. WATER WORKS -
NO NIGHT LIGHTS. ELEC. FUEL COOL.
RUN DRY TIME ONLY.
SCALE 100 FT TO AN INCH

1 NIGHT & SUNDAY WATCHMEN
WATCHMEN CLOCK - 5 STATIONS
HALL HOURLY ROUNDS 300 T. C.I. PIPE
NO HEAT ON LIGHTS - FUEL. REFUSE
THRU 2 ST. BURNING. PRESSURE
FROM 3400 PSI. W.T. ELEV'D 85
TO 1000 PSI PER MIN.

Scale of Feet.
0 50 100 150

Located 1/2 Mile NW of PO.