

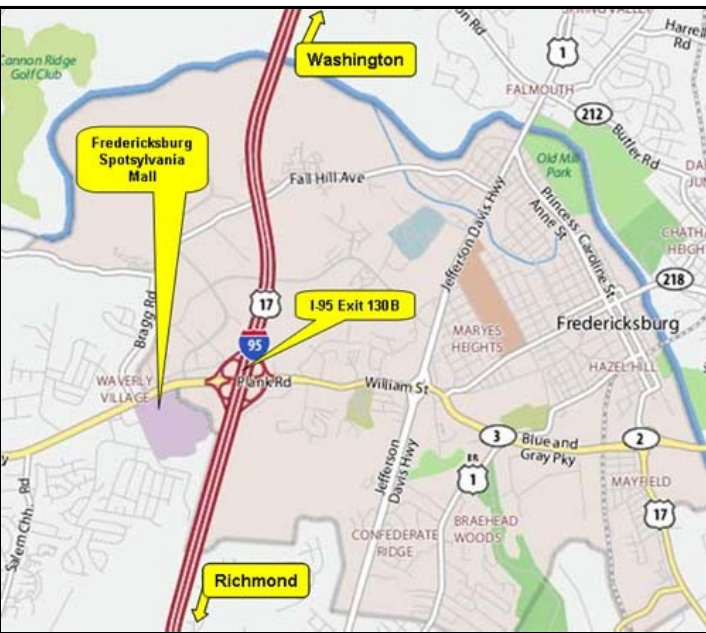
## Springfield Hilton Hotel



From southbound I-95 take exit 169A, cross back over I-95. The Hilton Hotel will be visible on the right. Turn right on Loisdale Rd, and then right into the Hilton Hotel parking area.

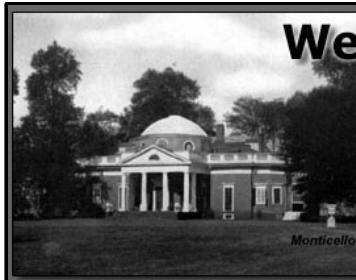
From northbound I-95 exit, take exit 169A, turn left onto Loisdale Rd, and then left onto Loisdale Ct. The Hilton Hotel will be the last building on the right.

## Fredericksburg Spotsylvania Mall



Take I-95 exit 130B (Culpeper). The sign for Spotsylvania mall will be on the left about 2 lights ahead, as well as a MacDonalds. Turn left into the mall parking lot there. The bus normally parks in front of Belk department store.

# West Point Parent Club



Maryland  
Washington DC  
Virginia



## Cadet Buses

Through our Transportation Coordinator (wppcbus@west-point.org), the WPPC MD-DC-VA provides comfortable, convenient, and economical bus transportation services for our cadets to come home on selected long weekends and holidays. Notices and coordination information are disseminated through the club's listserv. If you are not a member of our club and want to use our bus service, we strongly advise you to join the WPPC MD-DC-VA as all information about the buses is disseminated through the club listserv that is only open to members. Membership is \$100 for 4 years; if you are not a member of another WP Parent Club and \$15 (Associate Member) if you are a member of another WP Parent Club. Beginning on Labor Day 2010, cost for the bus is \$65 one way/\$110 round trip for members, \$75 one way/\$150 round trip for non-members. (Subject to change due to fuel surcharges). Walk-ons will be accommodated when seats are available.

The motor coach service is by far the most suitable, direct mode of travel between West Point and the Capital District area. The pick-up/drop-off point at USMA is generally in the parking lot by Clinton Field behind the viewing stands for The Plain. The bus has four convenient destinations along Interstate 95 Highway:

- 1) Park 'N Ride at White Marsh Mall in MD,
- 2) Laurel Rest Area along I-95 in MD,
- 3) Springfield Mall, VA and
- 4) Spotsylvania Mall in Fredericksburg, VA.

(See maps inside and on back to identify these locations). Departure/Arrival times are set in conjunction with official release/reporting times set by USMA.

Trips are scheduled based on the prior year's usage and current year's academic calendar. Subject to calendar change, we expect to run buses for Labor Day Weekend, Thanksgiving Break, Christmas Break, President's Day Weekend, Spring Break, and Graduation Day.

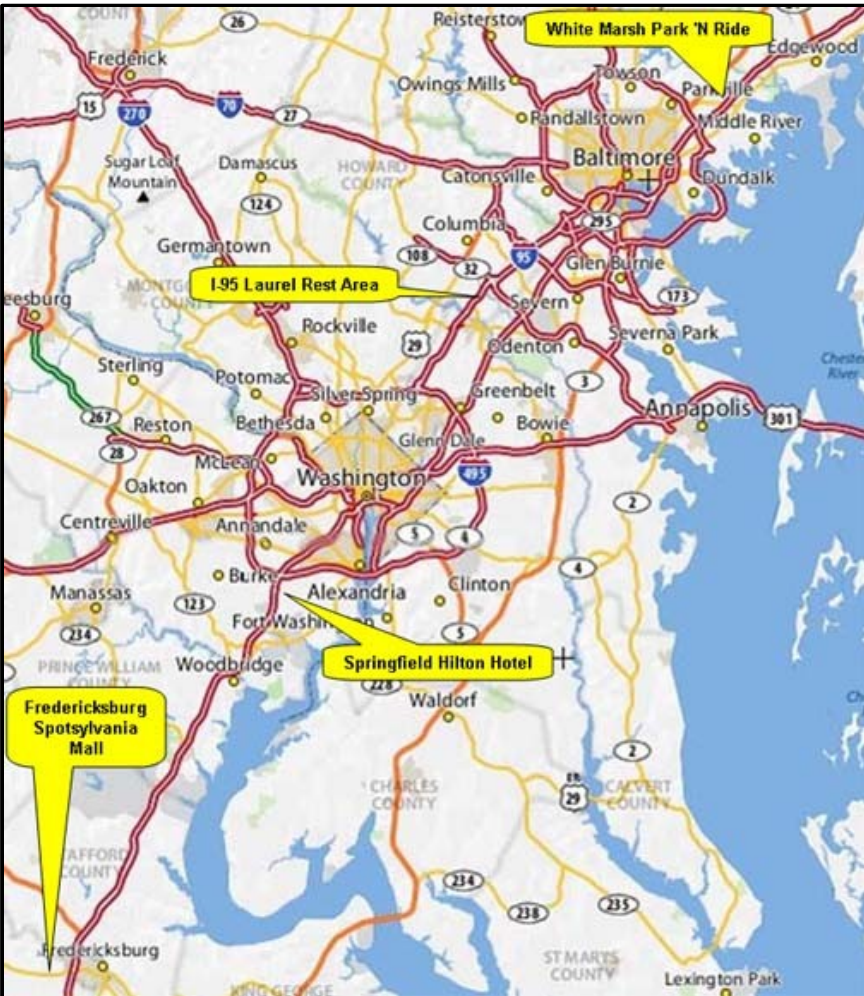
### TO SIGN UP FOR THE BUSES:

go to <https://secure.west-point.org/wppcmddcva/bustrips/> and fill in the form. You can reserve up to two spaces per reservation. Credit Card payment will be collected at the time the reservation is made.

### FOR ALL OTHER BUS RELATED MATTERS

(special case reservations, changes, cancellations, comments & suggestions) Please email [wppcbus@west-point.org](mailto:wppcbus@west-point.org)

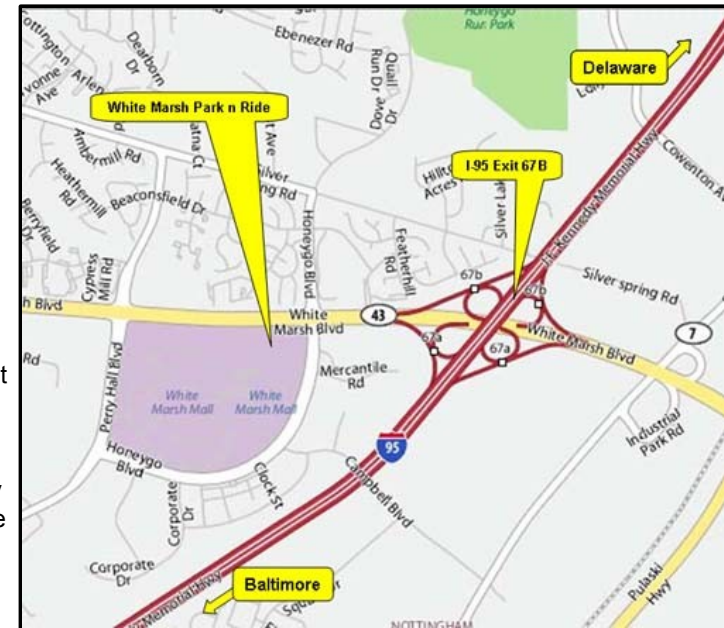
## Drop off / pick up locations



The WPPC-MDDCVA Buses run through the Baltimore/Washington area along I-95. Four drop-off/pick-up stops are spread along the route.

## White Marsh Park 'N Ride

On I-95 take exit 67B (White Marsh Blvd, Rt 43 west). Immediately get into the far left lane (turn lane). Make a left at the first light onto Honeygo Blvd. Immediately get into the far right lane and bear right at the first light which heads into White Marsh mall parking area. Stay in the far right lane which turns into the park and ride



## Laurel Rest Area

I-95 between Exit 38 (MD Rt 32) and Exit 35 (MD Rt 216).

Drop-off (southbound rest area / Welcome Center.) When driving south pass Exit 38 Take the next turn-off to the right. When driving northbound, loop back at Exit 38B onto I-95 South and follow the instructions above.



Pick-up ( northbound rest area). When driving north pass Exit 35. Take the next turn-off to the right. When driving south-bound loop back at Exit 35A onto I-95 North and follow the instructions above.