

W  
E  
S  
T  
P  
O  
I  
N  
T

The  
1963 1964

CADET

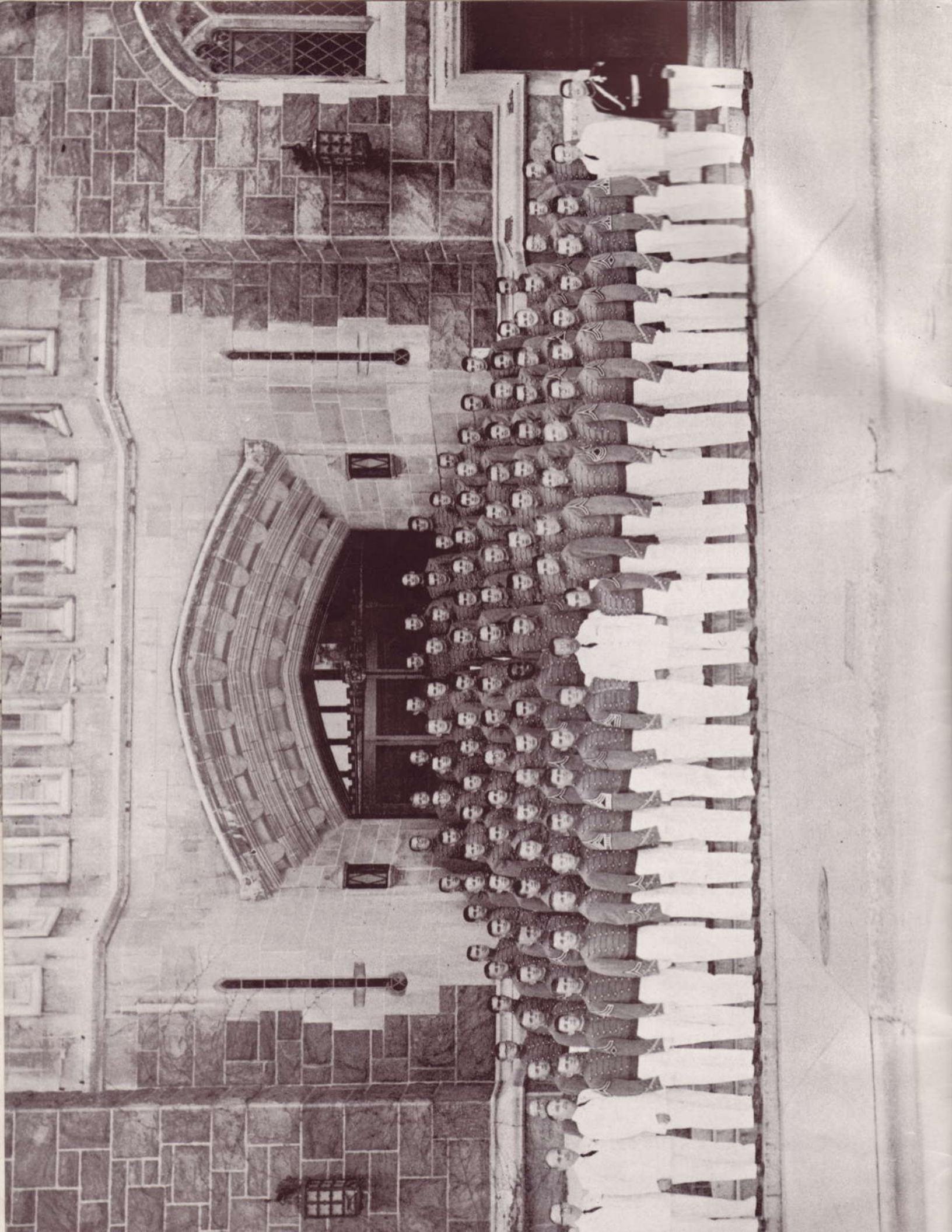
GLEE

CLUB

of the

UNITED STATES MILITARY ACADEMY





# THE CADET GLEE CLUB

---

The Cadet Glee Club first came into existence as an officially recognized organization in 1908 with the presentation of two concerts at West Point that year. Records of informal gatherings of cadets in song go back as far as 1870; however, it probably can be assumed that the Glee Club had its start in Benny Havens' legendary tavern outside the gates of West Point in the early 1820's. The slowness of official approval of a Glee Club was due in part to indications that the Tactical Department thought singing except in Chapel to be frivolous conduct.

Between 1909 and 1919 the original organization appears to have lapsed as a cadet activity. In 1919, the organization of a Cadet Glee Club was again approved by the Office of the Commandant and has continued without interruption since that date. From the 1928 membership of 25 cadets and two or three concerts in the immediate vicinity of the Military Academy, the Glee Club has expanded in size and scope of activity to the 1963-64 group, which comprises 120 cadets and has a concert schedule of over twenty-five appearances in ten states.

The prestige of the Glee Club has also risen since 1928, and it is privileged to list among its recent presentations those at Carnegie Hall and Town Hall in New York City, Constitution Hall in Washington, D.C. and Symphony Hall in Boston. Over the past years the Club has traveled from Colorado to Canada, with appearances in Denver, Chicago, Pittsburgh, Norfolk, Buffalo, Detroit and Toronto before groups and individuals such as the Football Hall of Fame, American Newspaper Publishers, American School Admin-

istrators, General MacArthur and the President of the United States.

Television appearances are also on the agenda, as the Glee Club annually performs on such shows as Bell Telephone Hour, the Perry Como Show and the Ed Sullivan Show.

The Glee Club consists of approximately 120 members of the three upper classes, chosen on the basis of semi-annual try-outs. The members represent some 40 of the nation's 50 states.

Each week two one and one-half hour rehearsals prepare the Club for the year's busy schedule. Much of the music the group sings depicts the history of the Armed Forces. Along with some concert pieces, there is usually some segment of the program devoted to lighter songs, American musicals and folk songs.

As an extracurricular activity of the Military Academy, it is supported by non-appropriated funds although its travel expenses are borne by the concert hosts.

In 1958 a Glee Club was organized for Fourth Classmen (Freshmen) who are not included in the membership of the Cadet Glee Club. This club annually presents its four concerts in the immediate vicinity of the Academy.

In addition to its many concerts, the Glee Club has made four commercial LP records for Vox Productions, Inc. and two Cadet Quartets have also recorded albums.

# DIRECTOR



## ABOUT LT. COLONEL WILLIAM H. SCHEMPF

The Director of the Cadet Glee Club is Lt. Colonel William H. Schempf, a 1939 graduate of the University of Wisconsin. Colonel Schempf was awarded a fellowship at the Eastman School of Music, University of Rochester, from which he received the Master of Music Degree in 1941. During World War II, he served with distinction as a commissioned officer of the Army Air Corps.

In 1947 Colonel Schempf became the Director of the Department of Music at Lehigh University. In 1952 he was awarded a Fulbright Fellowship at Vienna, Austria. During 1956 and 1957 he participated in the conductors' workshops of George Szell and Eugene Ormandy. In 1957 Colonel Schempf assumed his present position as Director of Music, Commanding Officer and Bandmaster of the United States Military Academy Band. He assumed the directorship of the Glee Club in 1958. The University of Rochester awarded him a PhD in Music in 1961.

## OFFICER IN CHARGE

### ABOUT CAPTAIN GERALD E. GALLOWAY, JR.

Captain Galloway, a former member of the Cadet Glee Club and the present Officer in Charge, graduated from West Point in 1957 into the Corps of Engineers. Following troop duty in Europe and post-graduate studies at Princeton, where he earned a MS in Engineering, he was assigned as Area Engineer for the New York District, Corps of Engineers, supervising major military construction at the Academy.

## CADET OFFICERS

### ABOUT CADET FREDERIC C. GRAY

Fred Gray, the President of the Cadet Glee Club, is a cadet who has distinguished himself in academic, athletic and musical endeavors. In addition to his singing ability, he is an accomplished amateur composer having written the musical score for the 1962 One Hundredth Night Show, the annual musical production of the Corps of Cadets. Fred can also handle a trumpet well and has been a member of several amateur and professional musical combos.

### ABOUT CADET STEPHEN M. OVERTON

Steve Overton is the Glee Club's Cadet Director. A product of Michigan, Steve won national recognition in high school for his skill in playing the baritone and tuba. At present he is the director of the Cadet Band in which he also plays the baritone. Steve's immediate family is also musically active—no less than six of this group are currently engaged in teaching, studying or creating music.



**Mapping Plans For A Concert.** Cadet F. C. Gray discusses the schedule with Captain Galloway and Cadet Overton.

## ASSISTANT OFFICERS IN CHARGE



Lt. Col. T. J. Nichols  
*Dept. of Law*



Maj. P. R. Hilty  
*Dept. of English*



Maj. D. G. Weinert  
*Dept. of Tactics*



Maj. M. R. Thurman  
*Dept. of Tactics*



## ACCOMPANIST

### ABOUT SPECIALIST SIXTH CLASS BRUCE STEEG

Bruce Steeg, a graduate of the Juilliard School of Music, has been soloist with the ABC Symphony, Queens Symphony, Denver Symphony, Lynbrook Philharmonic and the New York Philharmonic. As Paul Whiteman's "new protege" he performed for President Eisenhower and Vice President Nixon. He has made appearances on radio and television, for the George Gershwin memorial concert at Carnegie Hall, the ASCAP Ball at the Waldorf-Astoria, the Stardust Hotel in Las Vegas and the Stony Brook Music Festival. He is currently a pianist with the United States Military Academy Band.



## OUTGOING OFFICERS

### CLASS OF 1964

*President* . . . . . Fred Gray  
*Cadet Director* . . . . . Steve Overton  
*Custodian* . . . . . Jeff Kleb  
*Information Officer* . . . . . George Lonsberry

### CLASS OF 1965

*Secretary (not pictured)* . . . . . Duncan McVicar  
*Librarian* . . . . . John Pickler  
*Budget Officer* . . . . . John Swennson  
*Stage Manager* . . . . . Jon Plaas



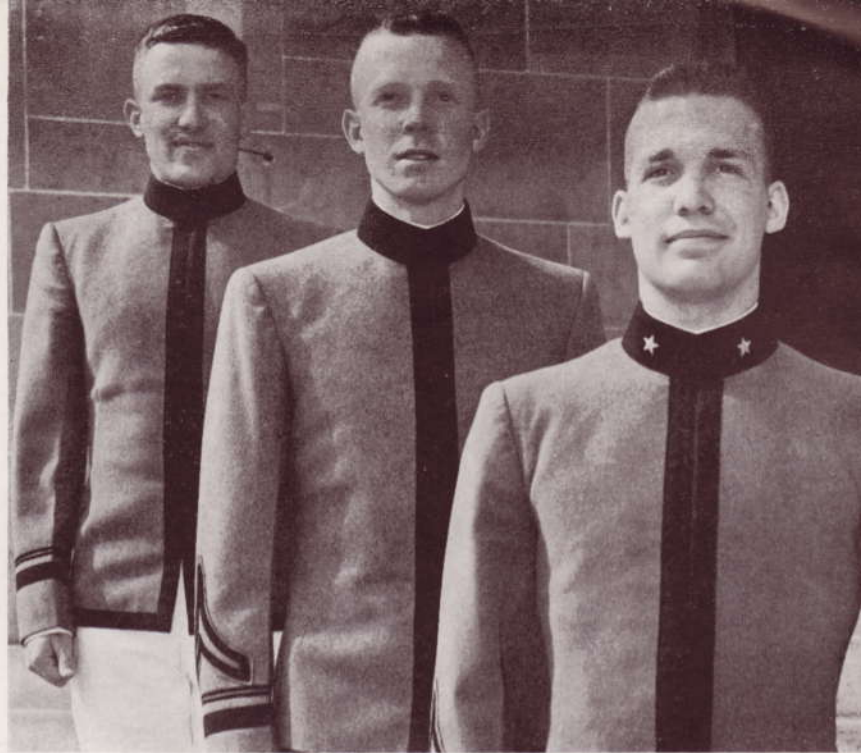
### THE HEADLINERS

The best in folk music is the forte of the Headliners. The members (L-R) are Mike Connor, Jim Connell, Steve Davis, and Louis Csoka.

# INCOMING OFFICERS

## CLASS OF 1965

- President* . . . . . Duncan McVicar  
*Vice President-Custodian* . . . . . John Pickler  
*Information Officer* . . . . . Jim Ferguson  
*Cadet Director (not pictured)* . . . . . Lou Csoka



## CLASS OF 1966

- Librarian* . . . . . Frank Rybicki  
*Stage Manager* . . . . . Morris Faber  
*Secretary* . . . . . Tom Hayes  
*Budget Officer* . . . . . Ron Stenstrom

## BARBERSHOP QUARTET

This group with their good old fashioned close harmony has added great variety to the Glee Club. The quartet includes (L-R) Jeff Kleb, Bob Balderson, Bob Johnson, and Joe Moss.



# GLEE CLUB MEMBERSHIP

## FIRST TENORS

### First Classmen

Larry Blair  
Tom Chapman  
Walt Davis  
Ben Hunneycutt  
Jack Little  
Joe Moss  
Woody Rogers

### Second Classmen

John Alger  
Jack Cooley  
Lou Csoka  
Jim Ferguson  
Bob Frey  
Mike Glynne  
José Gonzales  
Jim Holmes  
Peter Lynn  
Tim O'Hara  
Tom Powers  
Frank Reller  
Mike Shulick

### Third Classmen

Chuck Backlin  
John Detrick  
Morris Faber  
John Kelsey  
Herb Miller  
Don Scoggin  
Gerry Smith

## SECOND TENORS

Seavy Bain  
Bob Balderson  
George Basehart  
Tobi Colburn  
David Dews  
Fred Gray  
John Harnisch  
Ed Mackey  
Remo Melchiori  
Steve Overton

Mike Connor  
Steve Davis  
Bruce Gailey  
Lew Green  
Gordy Larson  
Mike Teeters

Bill Barry  
Pete Cecere  
Ron Carpenter  
Gene Driscoll  
John Ford  
George Grandison  
Walt Harper  
Russ Jenna  
Doug Laipple  
Art Mosley  
Richard Moushegian  
Frank Rybicki  
Ron Steen  
Marc Tumas

## BARITONES

Dick Dexter  
Buddy Kelton  
Pete Kufeke  
Tom Lough  
Charlie Miller  
Ron Williamson

Joe Anderson  
Tony Borrego  
Dick Drass  
Terry Grandstaff  
David Gnuau  
Ted Kleinmaier  
Ladd Metzner  
Chet Myers  
John Pickler  
Doug Sikorski  
Rick Sinnreich  
John Swensson  
Terry Tutchings

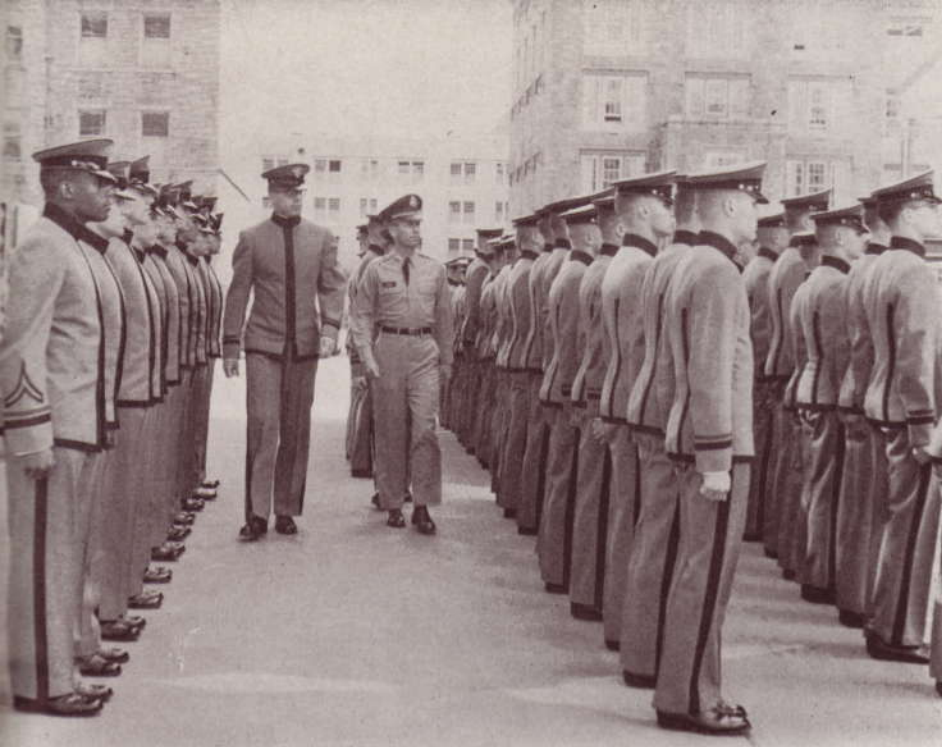
Rees Barksdale  
Jim Connell  
John Donovan  
Dave Eichenberger  
John Fera  
Jim Hackett  
Charles Hines  
John Kushkowsky  
Nelson Newhouse  
Ron Stenstrom

## BASSES

Rog Baldwin  
Tom Erdman  
Dan Evans  
Mont Hubbard  
Bob Johnson  
Jeff Kleb  
Ken Kvam  
George Lonsberry  
Hank Thomas  
Bill Vineyard

Erroll Alexander  
Denny Brewer  
Dick Coleman  
Pat Kenny  
Chuck McCloskey  
John McCullough  
Duncan MacVicar  
Jon Plaas  
Bob Stowell  
Terry Throckmorton  
Terry Ryan  
Step Tyner

Welsh Agnew  
Warren Albrecht  
Doug Booth  
Bill Dock  
Hilton Dunn  
Tom Hayes  
Jim Nibbelink  
Bill Otto  
Paul Thomas  
Jim VanSickle



## Glee Club Fall In! Prepare For Inspection

Here it all begins. With the command "Prepare for inspection" the Glee Club completes the first step of: . . .

### GLEE CLUB TRIPS AND PERFORMANCES 1963-64

- |          |   |            |   |
|----------|---|------------|---|
| 1-2 Nov. | Chicago—Mosaic TV Show on Channel 11 and Illinois Chamber of Commerce Banquet | 18-20 Mar. | Los Angeles—AUSA, Fort MacArthur and Shrine Auditorium with <i>Raymond Massey</i> |
| 10 Nov.  | Ed Sullivan Show—CBS TV   | 20-23 Mar. | San Francisco—AUSA, Presidio, Letterman Hospital and Masonic Auditorium           |
| 24 Jan.  | Danbury, Conn.—American Red Cross   | 22 Mar.    | San Diego—Balboa Park and Naval Training Center                                   |
| 25 Jan.  | New York Athletic Club  | 10 Apr.    | Dateline Boston—TV  |
| 1 Feb.   | Midwinter Concert, USMA with <i>Martha Wright</i>                             | 10 Apr.    | Dorchester, Mass.—Catherine Labouré School of Nursing                             |
| 9 Feb.   | Closter, N. J.—Lions Club, New Jersey Tercentenary Celebration                | 11 Apr.    | Arlington, Mass.—Boy's Club   |
| 20 Feb.  | Ridgewood, N. J.—Lions Club   | 2 May      | USMA, Thayer Award  |
| 21 Feb.  | Morristown, N. J.—YMCA  | 5 May      | Bell Telephone Hour—NBC TV  |
| 22 Feb.  | Richmond, Va.—AUSA, The Mosque  | 15 May     | Elizabeth, N. J.—YWCA   |
| 6 Mar.   | Eleanor Roosevelt Memorial—Philharmonic Hall, Lincoln Center                  | 16 May     | World's Fair—U. S. Pavilion   |
|          |   | 31 May     | June Week Concert, USMA   |



ABOVE: The Glee Club appears on Mosaic on Channel 11, Chicago in conjunction with the Army-Air Force football game. RIGHT: The Glee Club goes big time as it appears before the cameras on the Ed Sullivan Show. BELOW: Martha Wright added glamour and a beautiful singing voice to the Midwinter Concert.





ABOVE: The Glee Club joins with the Ladycliff College Glee Club to salute Closter, New Jersey in honor of the state Tercentenary. LEFT: Following the concert, the Lion's Club hosted an informal dinner. BELOW: Cadet Director Steve Overton starts the program in Morristown, N. J.



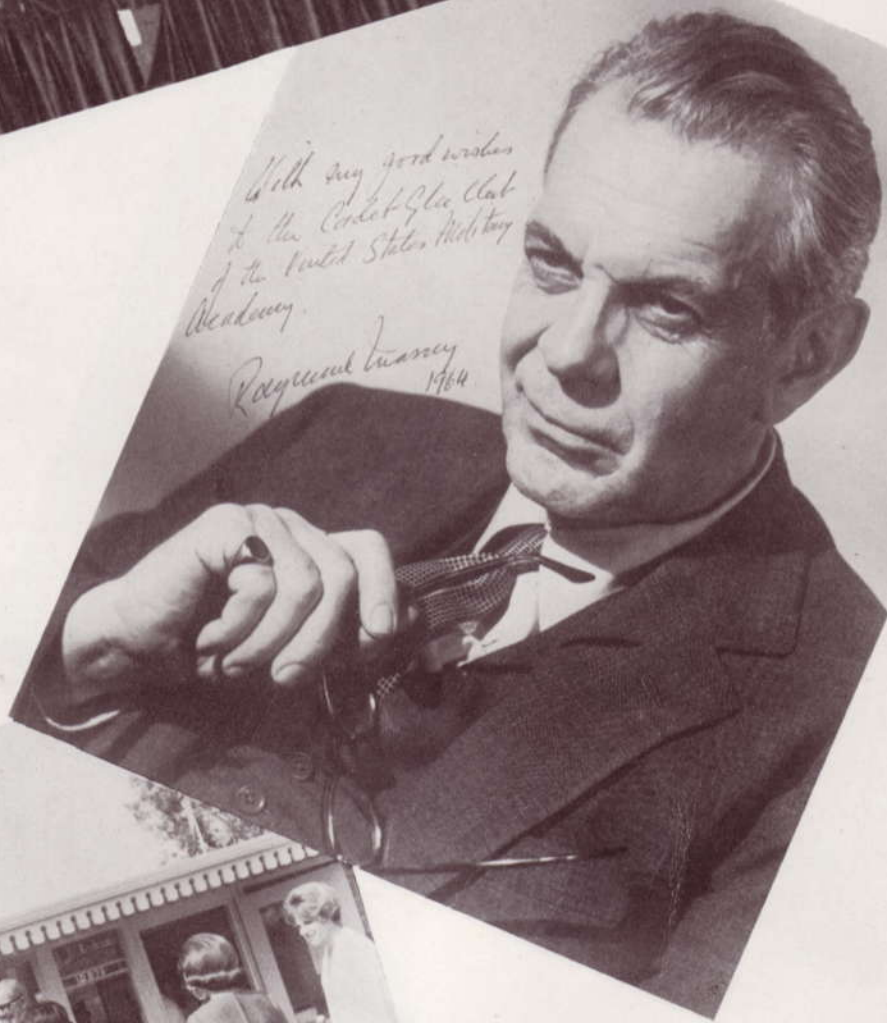


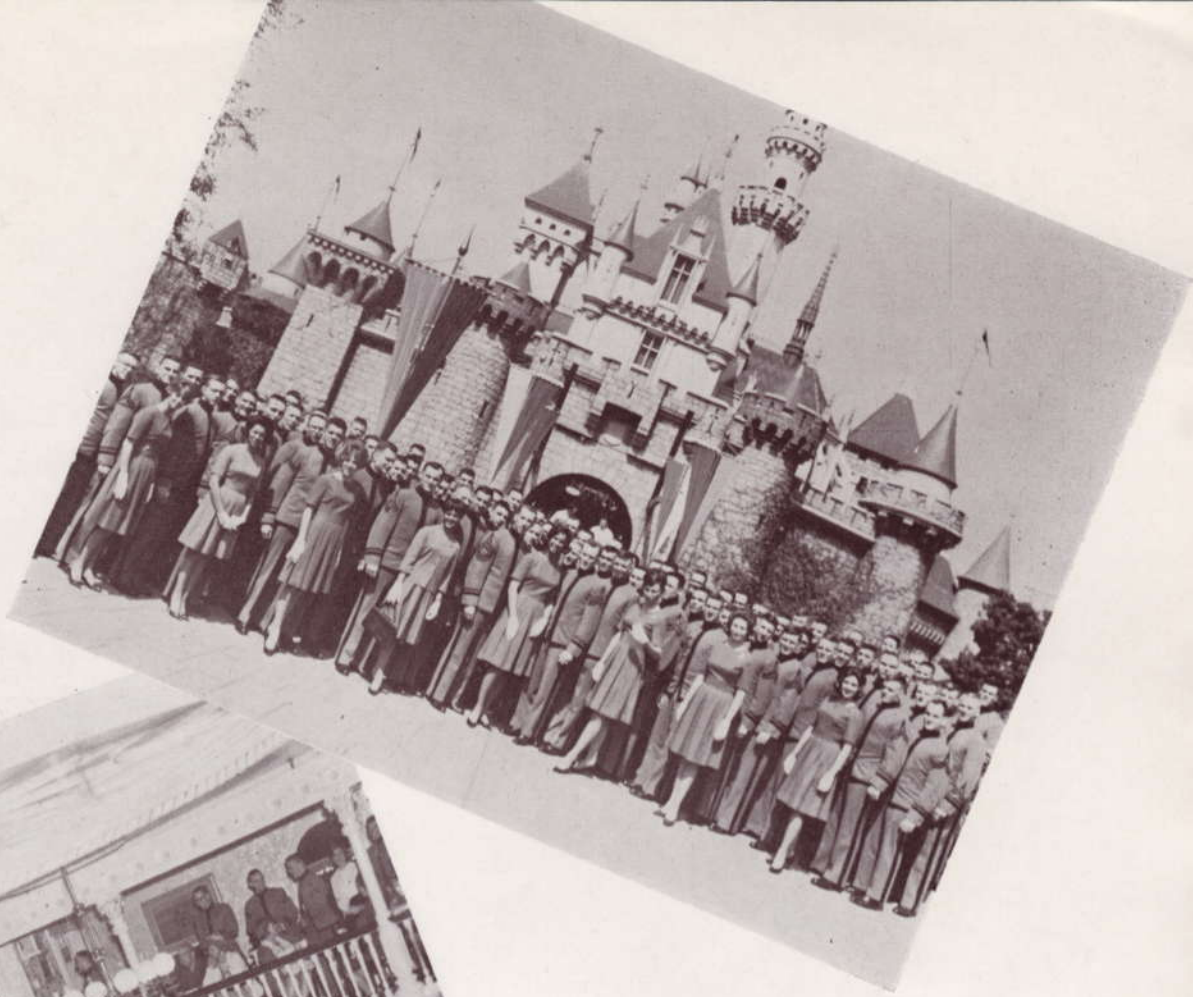
ABOVE: On arrival at Richmond's Byrd Field the Glee Club was greeted by the CG of the 80th Division (NG) and the CG of the Defense General Supply Center. RIGHT: Cadets Miller and Moss pose with two Army nurse trainees by the U. S. Army Display at the Richmond concert. BELOW: Mr. Dore Schary leads the audience and the Glee Club (background) in a moment of silent prayer during the Eleanor Roosevelt Memorial Concert at Lincoln Center.





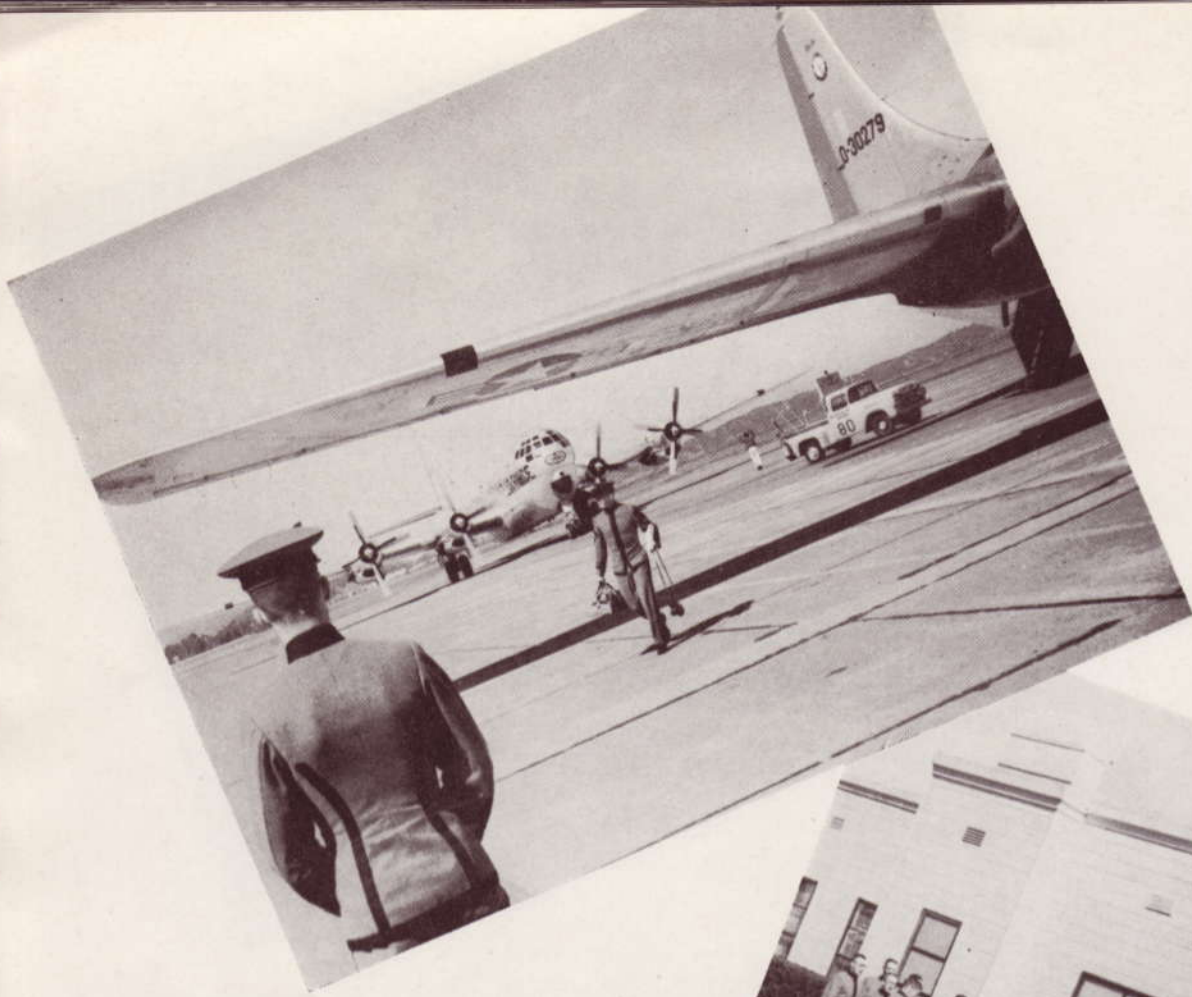
ABOVE: On stage at Shrine Auditorium, Los Angeles, with Cadet Joe Anderson, soloist. RIGHT: The distinguished actor Raymond Massey recited Gen. MacArthur's "Duty, Honor, Country" farewell as part of the Los Angeles concert. BELOW: Disneyland—The Director and the cadets meet their escorts for a whirlwind tour.





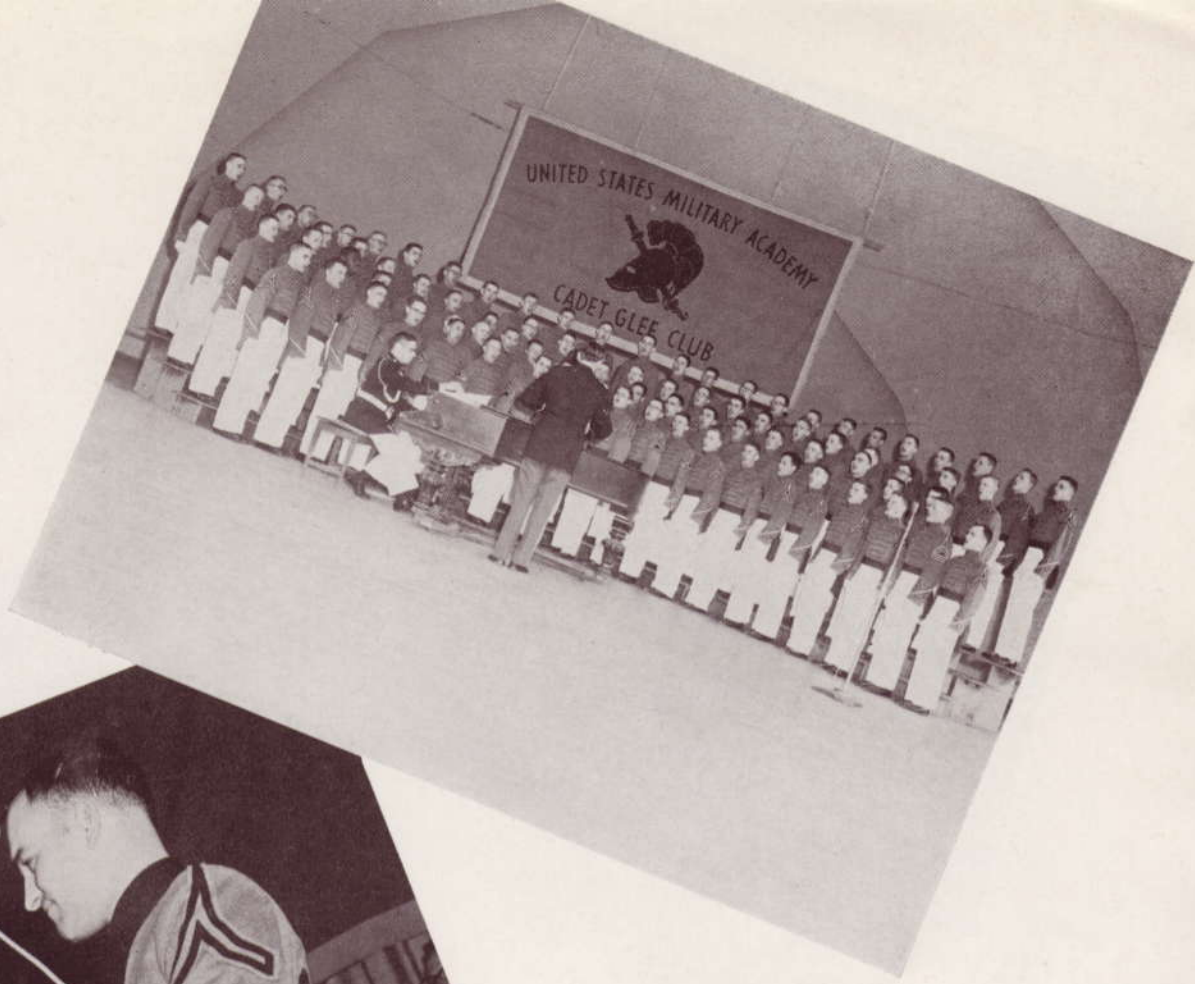
ABOVE: The Glee Club poses with their guides in front of Fantasyland. LEFT: A 10 minute break —Pepsi-Cola provides refreshments at the Golden Horseshoe Saloon. BELOW: On stage at the Carnation Gardens in Disneyland.





ABOVE: The Glee Club deplanes at Hamilton AFB outside of San Francisco. RIGHT: The patients at Letterman General Hospital gathered in the Plaza to listen to a short performance. BELOW: Prior to moving to San Diego's Balboa Bowl, the Club forms in front of Naval Training Center Headquarters.



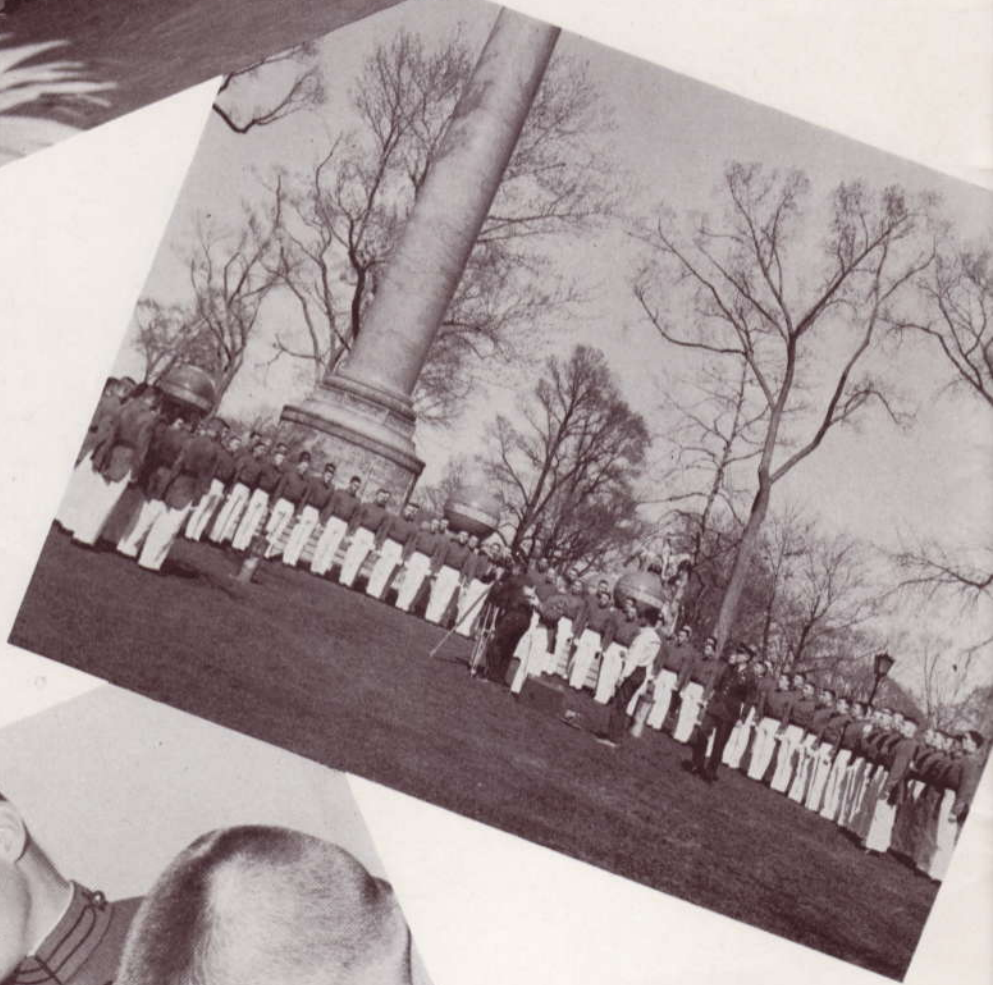


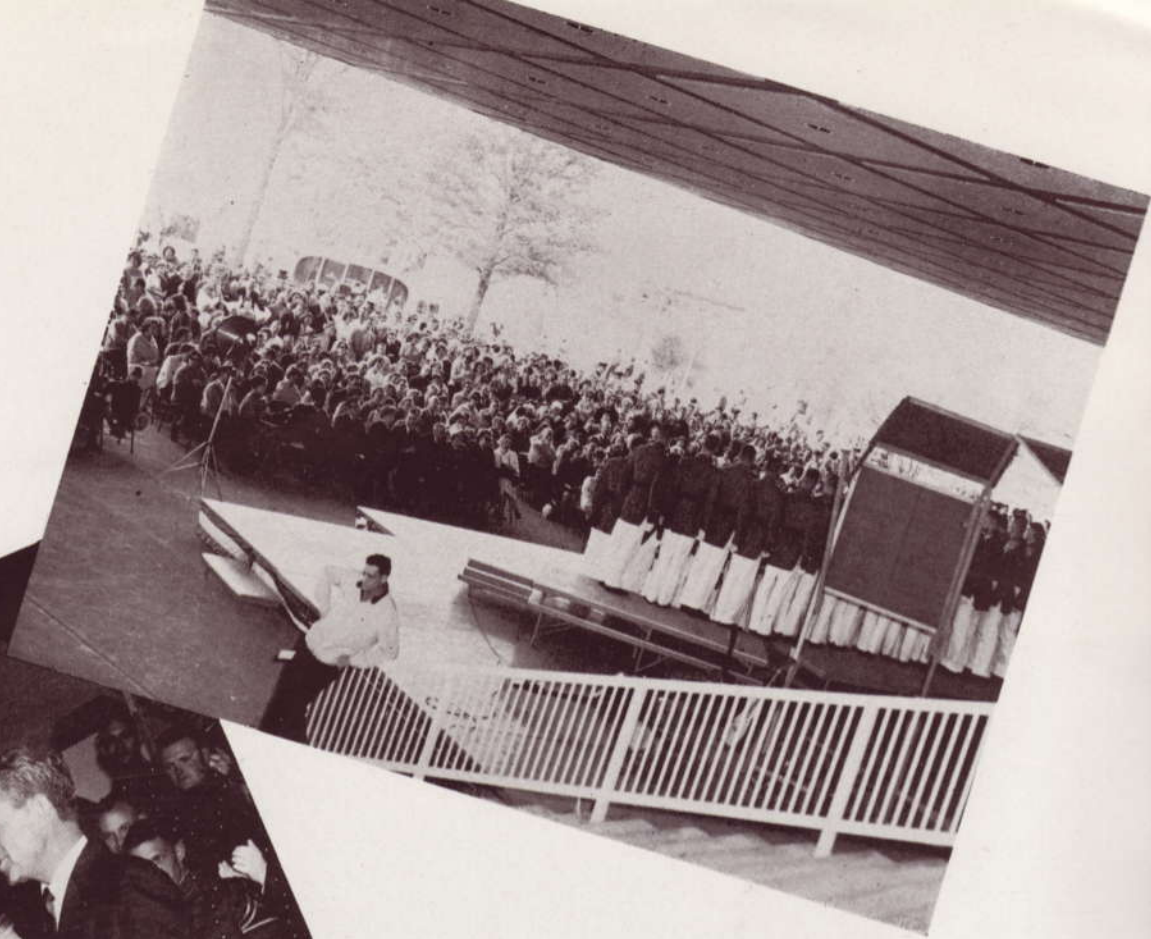
ABOVE: On stage in Balboa Bowl, San Diego's 4000 seat outdoor theater. LEFT: Cadet Fred Gray presents a plaque to Captain Lee Rogers of the Naval Training Center, the Glee Club's gracious host in San Diego. BELOW: The Glee Club enjoys a dance and a social gathering following a concert in Arlington, Massachusetts.





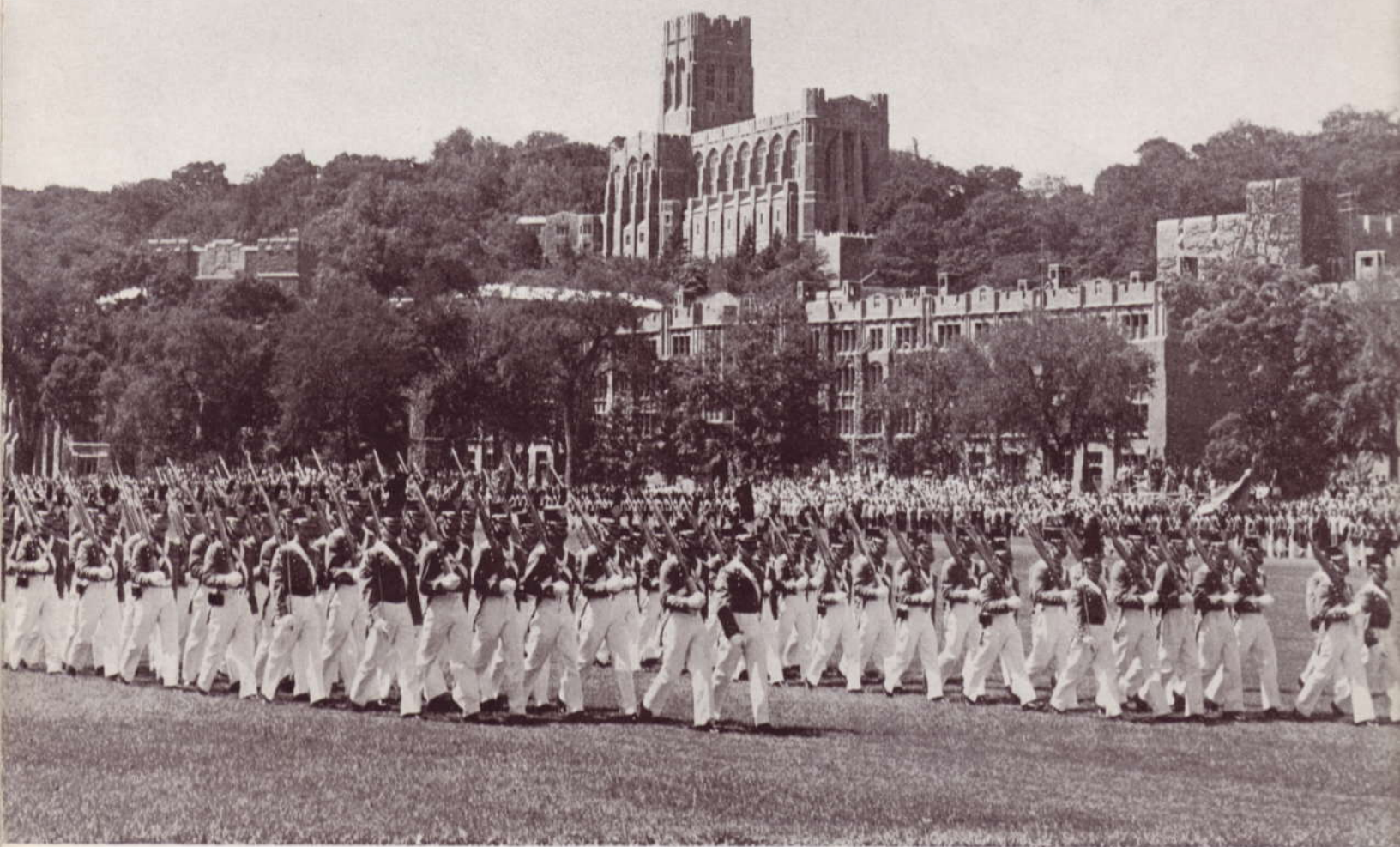
ABOVE: The Glee Club gave a concert in Washington Hall for the recipient of the Thayer Award. RIGHT: The Bell Telephone Hour sent their camera crew to Trophy Point to film the May 5th Show. BELOW: Miss Lelia Gasorek adjusts Cadet Dick Drass' cuffs prior to the Elizabeth, New Jersey concert.





ABOVE: 1200 visitors to the New York World's Fair listen attentively to the Glee Club. LEFT: Cadet Harold Kindleberger thanks General Potter of the Fair for inviting the Corps and the Glee Club to visit the area. BELOW: The Headliners entertain the crowd in front of the U. S. Pavilion.





The Long Grey Line in the shadow of the silent sentinel,  
the Cadet Chapel. West Point Cadets parade during  
June Week on the Military Academy "Plain."

June Week is the culmination of the academic year for all cadets. But, for the First Classmen, it's graduation, the gold bars of a second lieutenant, and the beginning of applying his education and training to a successful military career—the threshold of a future of rewarding service to his country.

